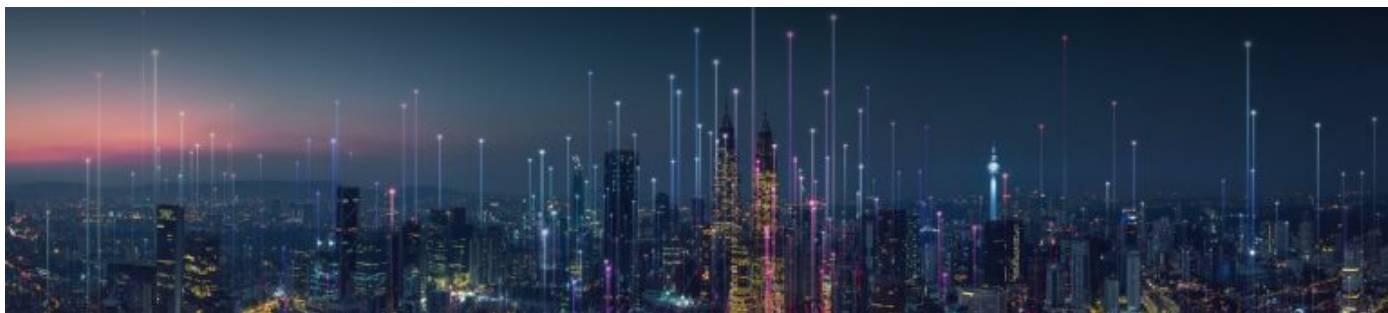


Технические характеристики

По вопросам продаж и поддержки обращайтесь:

Алматы (7273)495-231	Калининград (4012)72-03-81	Омск (3812)21-46-40	Сыктывкар (8212)25-95-17
Ангарск (3955)60-70-56	Калуга (4842)92-23-67	Орел (4862)44-53-42	Тамбов (4752)50-40-97
Архангельск (8182)63-90-72	Кемерово (3842)65-04-62	Оренбург (3532)37-68-04	Тверь (4822)63-31-35
Астрахань (8512)99-46-04	Киров (8332)68-02-04	Пенза (8412)22-31-16	Тольятти (8482)63-91-07
Барнаул (3852)73-04-60	Коломна (4966)23-41-49	Петрозаводск (8142)55-98-37	Томск (3822)98-41-53
Белгород (4722)40-23-64	Кострома (4942)77-07-48	Псков (8112)59-10-37	Тула (4872)33-79-87
Благовещенск (4162)22-76-07	Краснодар (861)203-40-90	Пермь (342)205-81-47	Тюмень (3452)66-21-18
Брянск (4832)59-03-52	Красноярск (391)204-63-61	Ростов-на-Дону (863)308-18-15	Ульяновск (8422)24-23-59
Владивосток (423)249-28-31	Курск (4712)77-13-04	Рязань (4912)46-61-64	Улан-Удэ (3012)59-97-51
Владикавказ (8672)28-90-48	Курган (3522)50-90-47	Самара (846)206-03-16	Уфа (347)229-48-12
Владимир (4922)49-43-18	Липецк (4742)52-20-81	Саранск (8342)22-96-24	Хабаровск (4212)92-98-04
Волгоград (844)278-03-48	Магнитогорск (3519)55-03-13	Санкт-Петербург (812)309-46-40	Чебоксары (8352)28-53-07
Вологда (8172)26-41-59	Москва (495)268-04-70	Саратов (845)249-38-78	Челябинск (351)202-03-61
Воронеж (473)204-51-73	Мурманск (8152)59-64-93	Севастополь (8692)22-31-93	Череповец (8202)49-02-64
Екатеринбург (343)384-55-89	Набережные Челны (8552)20-53-41	Симферополь (3652)67-13-56	Чита (3022)38-34-83
Иваново (4932)77-34-06	Нижний Новгород (831)429-08-12	Смоленск (4812)29-41-54	Якутск (4112)23-90-97
Ижевск (3412)26-03-58	Новокузнецк (3843)20-46-81	Сочи (862)225-72-31	Ярославль (4852)69-52-93
Иркутск (395)279-98-46	Ноябрьск (3496)41-32-12	Ставрополь (8652)20-65-13	
Казань (843)206-01-48	Новосибирск (383)227-86-73	Сургут (3462)77-98-35	
Россия +7(495)268-04-70	Киргизия +996(312)-96-26-47	Казахстан +7(7172)727-132	



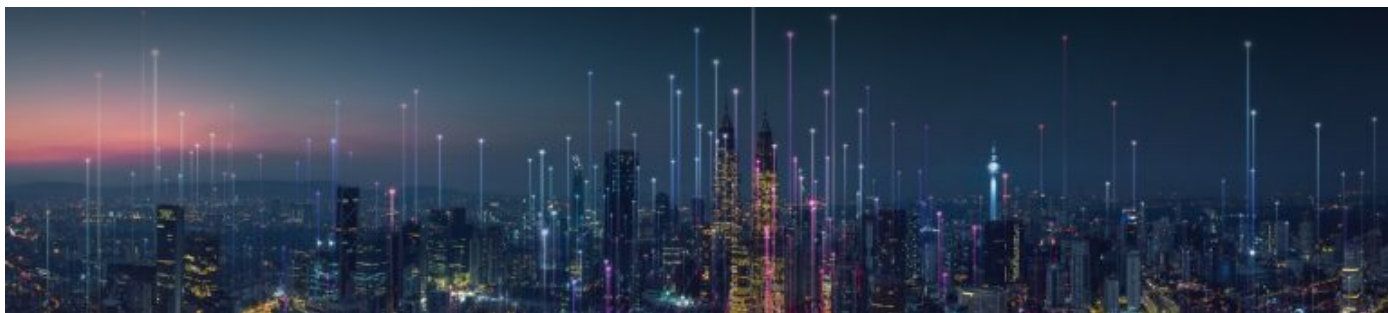
Fiber Optic Cable and Closure Solutions

Your connections deserve the best protection. No matter the size and configuration of your network, protecting its connectivity is what counts.

Cable and Closure Pairing Solutions

Fiber closures provide options for keeping your network technology safe and streaming. Corning offers optimized pairings of closures and cable types to help you decide what's essential to your network's set up.

There are several things to consider when choosing the right fiber closure for your network: aerial vs. buried, in-line vs. butt, number of port counts, and minimum cable diameter, to name a few. With just a few basics about where you need fiber closures and what kind of cable connections you're making, we can help you make the right decisions for your network today and in the future, as it grows.



Corning® RocketRibbon® Cable and 2178-XL Closures

Corning's optimized high-density ribbon cable and closure pairing solutions

Your connections deserve the best protection. No matter the size and configuration of your network, protecting its connectivity is what counts.

Corning's **Fiber Optic Splice Closure 2178 family** is ideal for our **RocketRibbon®** and SST-Ribbon™ cables. Our solutions provide excellent system flexibility and reliable protection for brownfield and greenfield deployments, smart designs to make your job easier, and features to meet network demands. Now, the 2178 family includes many models and configurations to help meet the complex needs of today's fiber optic networks. With large diameter ports compatible across all fiber counts and a newly designed deep tray 2453 supporting ultra-high fiber count solutions, the 2178 family can help you expand and get your network future-ready.

RocketRibbon® Extreme-Density Cable and 2178-XL and 2181 Cable Addition Kit Closure System

The closure is expandable to add more cable ports or additional splicing capacity

Gasket-sealing system makes it reusable and easy to re-enter

GR-771 compliant

No specific tools required, only a standard torque wrench

Closure design allows for mid-span and branch applications

Currently supports up to 3,456 splices

Suitable for Aerial, CO, Vault, Manhole, Handhole and Pedestal applications

Maximum cable diameter: 35.5 mm (1.4")

Butt or in-line splice closure

Grommets currently available for flat drop and RPX cables. More versions coming soon.

Flame retardant version available for vault applications

XL closure dimensions - (27.0 x 13.3 x 11.0 in) (660.4 x 337.8 x 279.4 mm).



Additional Closure Solutions for Corning® RocketRibbon® and SST-Ribbon™ Cables

We know every network configuration is unique. If the 2178 family doesn't meet the needs of your network, try our innovative **OptiSheath® aerial terminal**, SCA-9T closures. They provide low-cost environmental protection and quick incremental drop cable connection optimized for optical access architectures.



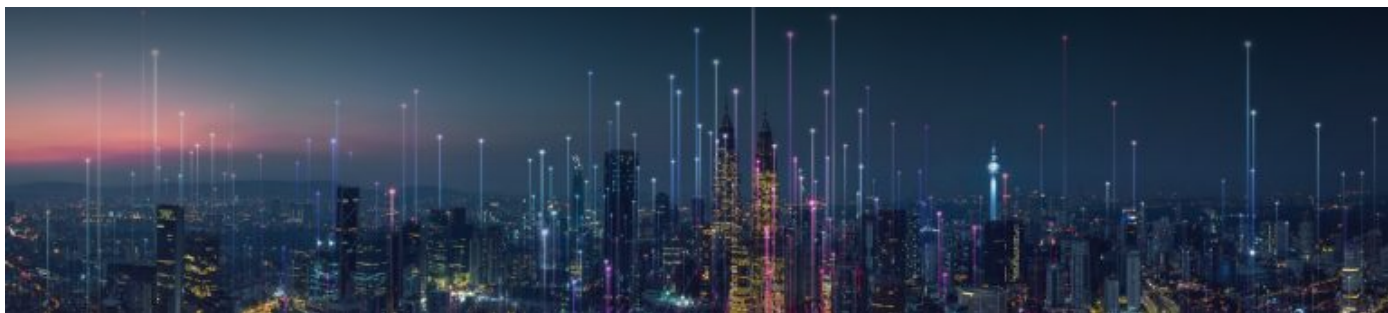
SST-Ribbon™ Cable and 2178 Closure Series

- Two mid-span cable access
- Available above and below grade
 - Butt splice closure
- Supports: 2178-XSB = 288 F, Size: 15 x 11 x 5 in, Maximum cable diameter: 35 in, Six round drop ports or six flat drop ports
- 2178-XLB = 432 F, Size: 15 x 11 x 6 in, Maximum cable diameter: 35 in, Three round drop ports or six flat drop ports
- 2178-LS = 864 F, Size: 22 x 9 x 8 in, Maximum cable diameter: 25 in, Two round drop ports or eight flat drop ports

SST-Ribbon™ Cable and SCA-9T Series Closures

SCA-9T34

- Available above grade
- Supports up to 576 splices
- 3 mid-span cable access
- Maximum cable diameter: 25 mm
- Butt and in-line splice closure
 - 16 entry ports
- 16 round drop or 16 flat drop ports
 - 35 x 9 x 7 in



ALTOS® Loose Tube Cable and Fiber Dome Closures

Corning's Optimized Loose Tube Cable and Closure Pairing Solutions

Your connections deserve the best protection. No matter the size and configuration of your network, protecting its connectivity is what counts.

Get assured protection and installation versatility for your **Corning ALTOS® loose tube** cabling needs with our **Fiber Dome Closure (FDC)** family. The FDC family provides multiple solutions for evolving networks with a complete product family, constructed from highly chemical-resistant materials, that can be deployed across buried, underground, and aerial environments. These easy-to-install closures cover all fiber counts with strong bonding and industry-friendly mechanical capabilities, making them the best closure choice for your loose tube installation needs. ECAM (External Cable Assembly Module) provides the safest and easiest conditions for cable addition.

FDC-10S-D

Fixed O-ring sealing system with latching mechanism for error-free re-entry

GR-771 compliant

Accommodates splitters and other optical devices

Easy cable addition

No special tools required

Hinged tray options with modular splice holders

Available above and below grade

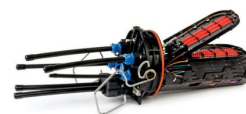
Up to seven ground lugs

Maximum cable diameter: 27 mm

Butt splice closure

Five round drop ports or up to 15 flat drop ports

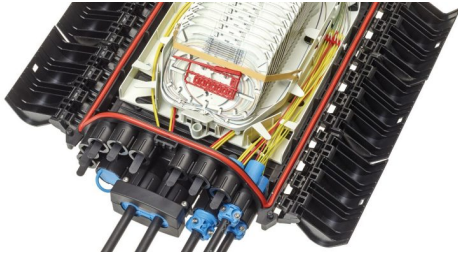
22 x 10 x 10 in



Additional Closure Solutions for ALTOS® Loose Tube Cable

There is no "one-size-fits-all" approach when it comes to your network. That is why we offer multiple closure solutions for every configuration. Fiber Optic **BPEO Closures** are designed with application flexibility in mind and support evolving fiber optic networks with

modular solutions above and below grade. The **2178 Fiber Optic Splice Closure** family provides multiple configurations to help your network support increasing bandwidth demands.



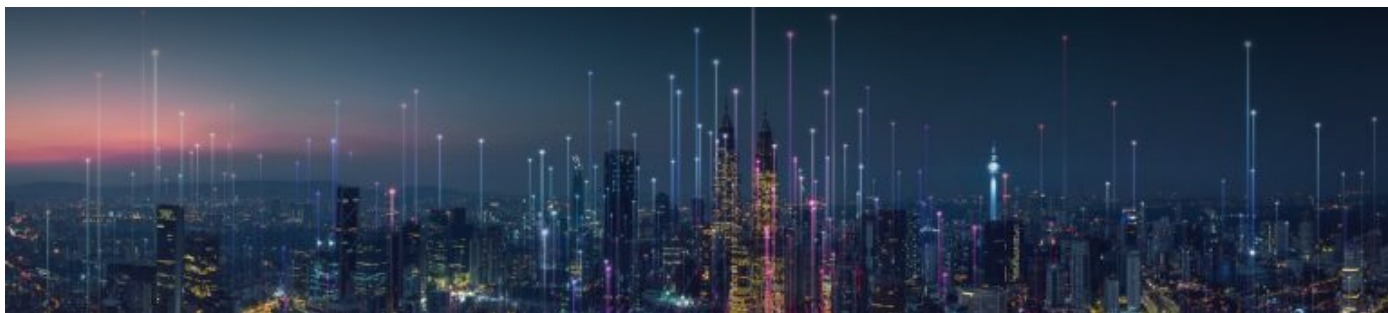
BPEO S1.5 and S2

- Available above and below grade
 - Supports 12-288 splices
- Maximum cable diameter: 18 mm
 - Butt splice closure
 - 16 entry cable ports
 - 27 round drop ports
 - S1.5: 15 x 8 x 5 in
 - S2: 20 x 13 x 6 in



2178-LS

- Available above and below grade
 - Supports 12-288 splices
- Maximum cable diameter: 25 mm
 - Butt and in-line splice closure
- Four round drop ports up to one-inch OD
 - Expansion kit up to 16 cable ports
 - 22 x 9 x 8 in



MiniXtend® Cable and BPEO Closures

Corning's optimized microcable and closure pairing solutions

Your connections deserve the best protection. No matter the size and configuration of your network, protecting its connectivity is what counts.

When it comes to the best closure suited for our **MiniXtend® cables with binderless* FastAccess® Technology**, the **BPEO closure** is ideal. Designed to be flexible for you when accessing cable in the field and available in a range of sizes, they can be deployed above grade (pole, façade) or below grade (manhole, handhole). These closures can be used for any FTTx deployment: HFC, FTTH, FTTB, and more. Mechanical and tool-free, these high-density closures are ideal for blown micro cable applications and feature microduct brackets for easy underground connection.

BPEO Closure Family

Compact size is suitable for micro cables

5 m waterhead (IEC)

Accommodates splitters and devices

Fully mechanical

Innovative single circuit management for
secure fiber routing in multiservice
deployments

Available above and below grade

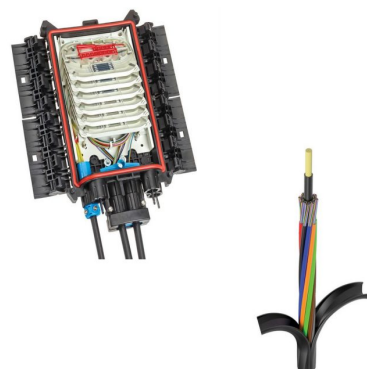
Maximum cable diameter: 27 mm

Butt and in-line splice closure

Up to 27 round drops

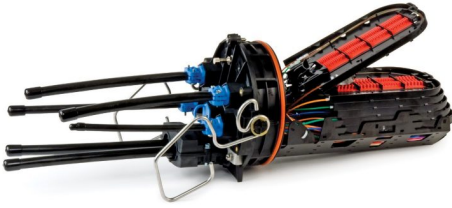
Minimum size: 10 x 10 x 4 in

Maximum size: 26 x 14 x 6 in



Additional Closure Options for MiniXtend® Cables

Meet your unique application needs with more of our industry-leading solutions. Our innovative Fiber Dome Closures (FDC) provide assured environmental protection and quick, incremental subscriber drops. The FDC family offers extensive installation versatility — below grade and aerial — along with multiple sizes that fit most butt/branch splicing configurations.



FDC-08M-A

- ECAM connector support
- Fixed O-ring sealing system with innovative latching mechanism
 - Single-Fiber Splices (Loose Tube): 72 (FDC08M), 96 (FDC08S), 288 (FDC10S), 576 (FDC12S)
- Mass Fusion Splices (Ribbon): 144 (FDC08M), 288 (FDC08S), 432 (FDC10S), 864 (FDC12S)
 - Butt-cable entry style
- Tested against GR-771

По вопросам продаж и поддержки обращайтесь:

Алматы (7273)495-231	Калининград (4012)72-03-81	Омск (3812)21-46-40	Сыктывкар (8212)25-95-17
Ангарск (3955)60-70-56	Калуга (4842)92-23-67	Орел (4862)44-53-42	Тамбов (4752)50-40-97
Архангельск (8182)63-90-72	Кемерово (3842)65-04-62	Оренбург (3532)37-68-04	Тверь (4822)63-31-35
Астрахань (8512)99-46-04	Киров (8332)68-02-04	Пенза (8412)22-31-16	Тольятти (8482)63-91-07
Барнаул (3852)73-04-60	Коломна (4966)23-41-49	Петрозаводск (8142)55-98-37	Томск (3822)98-41-53
Белгород (4722)40-23-64	Кострома (4942)77-07-48	Псков (8112)59-10-37	Тула (4872)33-79-87
Благовещенск (4162)22-76-07	Краснодар (861)203-40-90	Пермь (342)205-81-47	Тюмень (3452)66-21-18
Брянск (4832)59-03-52	Красноярск (391)204-63-61	Ростов-на-Дону (863)308-18-15	Ульяновск (8422)24-23-59
Владивосток (423)249-28-31	Курск (4712)77-13-04	Рязань (4912)46-61-64	Улан-Удэ (3012)59-97-51
Владикавказ (8672)28-90-48	Курган (3522)50-90-47	Самара (846)206-03-16	Уфа (347)229-48-12
Владимир (4922)49-43-18	Липецк (4742)52-20-81	Саранск (8342)22-96-24	Хабаровск (4212)92-98-04
Волгоград (844)278-03-48	Магнитогорск (3519)55-03-13	Санкт-Петербург (812)309-46-40	Чебоксары (8352)28-53-07
Вологда (8172)26-41-59	Москва (495)268-04-70	Саратов (845)249-38-78	Челябинск (351)202-03-61
Воронеж (473)204-51-73	Мурманск (8152)59-64-93	Севастополь (8692)22-31-93	Череповец (8202)49-02-64
Екатеринбург (343)384-55-89	Набережные Челны (8552)20-53-41	Симферополь (3652)67-13-56	Чита (3022)38-34-83
Иваново (4932)77-34-06	Нижний Новгород (831)429-08-12	Смоленск (4812)29-41-54	Якутск (4112)23-90-97
Ижевск (3412)26-03-58	Новокузнецк (3843)20-46-81	Сочи (862)225-72-31	Ярославль (4852)69-52-93
Иркутск (395)279-98-46	Ноябрьск (3496)41-32-12	Ставрополь (8652)20-65-13	
Казань (843)206-01-48	Новосибирск (383)227-86-73	Сургут (3462)77-98-35	
Россия +7(495)268-04-70	Киргизия +996(312)-96-26-47	Казахстан +7(7172)727-132	